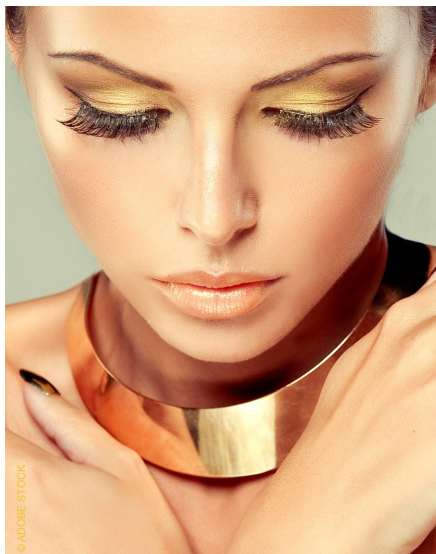




MAKE UP

# LA60038A | FRESH ILLUMINATING EYE SHADOW

Powdered gel with up to 20% glitters



Gel

Gel eye shadow,  
golden & sparkling, non sticky

Illuminating

20% Glitter

<b>A</b>	Aqua/Water Propanediol	Up to 100% 5.00%
<b>B</b>	<b>SIMULGEL™ I-NS 100</b> Phenoxyethanol - Ethylhexylglycerin Caprylyl glycol	<b>3.00%</b> 1.00% 0.50%
<b>C</b>	<b>SEPIFINE™ BB</b> Mica Calcium Aluminum Borosilicate - Titanium Dioxide Calcium Aluminum Borosilicate - Titanium Dioxide Mica - Titanium Dioxide Synthetic Fluorophlogopite - Iron Oxides (CI 77491) - Silica Mica - Titanium Dioxide - Iron Oxide	<b>2.00%</b> 10.00% 2.50%  2.50%  1.50% 2.00% 1.50%

**Gold Sparkling Gel / Packaging: Tube**  
pH: 6.25

**VISCOSITIES: 1M at RT:** 54,000 mPa.s Brookfield LV4-6 /  
**Recovery at RT (after 1M at 45°C):** 55,750 mPa.s Brookfield LV4-6.

**STABILITY:** 3M at RT & 45°C.

**FORMULATION ADVICES: Laboratory scale - 300 g - Deflocculator**

Put phase A under stirring and add the already prepared phase B, stir the mixture for 10 minutes at 1200 rpm. When the gel is homogeneous, add one by one phase C ingredients, stir until the mixture is homogeneous. Stop the stirring and check the pH, adjust it if necessary.

**This gel eye shadow illuminates your eyes with thousand lights. Its fresh & non-sticky texture makes it very comfortable to wear.**

*Highly concentrated in glitters, the formula provides a good & uniforme coverage that lasts all the night long!*

**SIMULGEL™ I-NS 100** thickens the formula & stabilizes 20% of glitters! It brings also a fresh & satin touch lightening the texture.

*(Hydroxyethyl Acrylate / Sodium Acryloyldimethyl Taurate Copolymer - Isohexadecane - Polysorbate 60)*

**Pre-neutralized liquid inverse latex polymer**, ready-for-use. **Thickening agent** which stabilizes all types of oily phases. It can be used in a wide range of pH (3 to 12), and for the development of all types of consistencies: sprays, ultra-fluid to thick ones. It gives to the formulas a **fresh & melting texture**.

**SEPIFINE™ BB** provides a velvety soft finish. It also supports the product good spreadability on the skin. *(Amylopectin)*

A **natural texturizing powder, ethically sourced**, coming from Babassu nut exclusively sourced in Brazil. This **biodegradable powder** provides a **soft & velvety skin finish** while creating a **pleasant playtime**.

**INGRÉDIENTS ADDITIONNELS:**

Phenoxyethanol and Ethylhexylglycerin - EUXYL PE9010 (Schülke & Mayr) / Sarfam Propanediol ZEMEA® (Du pont) / Caprylyl glycol Lexgard® (Inolex) / Mica Kobomica S-25 (KOB0) / Calcium Aluminum Borosilicate (and) Titanium Dioxide - K-RAY® G DIAMOND SPARKLE GOLD and K-RAY® G DIAMOND SPARKLE WHITE / Mica (and) Titanium Dioxide - KTZ® SHIMMER WHITE / Synthetic Fluorophlogopite (and) Iron Oxides (CI 77491) (and) Silica - KTZ® SM CRYSTAL GOLD (MERCK) - Mica (and) Titanium Dioxide (and) Iron Oxide Colorona® Fine Gold MP-20

More informations available on [seppic.com](http://seppic.com)

**SEPPIC**

All information contained herein is intended merely to demonstrate the utility of Seppic products, and should not be construed as granting license to practice any compositions or methods covered by a patent or a patent application. All information contained in this specific technical documentation is believed to be accurate and has been set up by Seppic according to its own described methods and processes. Seppic however does not assume any liability or risks involved in the use of its products for the preparation and the assessment of the hereinabove formulation since the condition of use are beyond its control. Seppic customer must insure that the duplication of the hereinabove formulation is not infringing any intellectual property rights and that it complies with any regulatory status.

**Air Liquide**  
HEALTH CARE  
*A company*