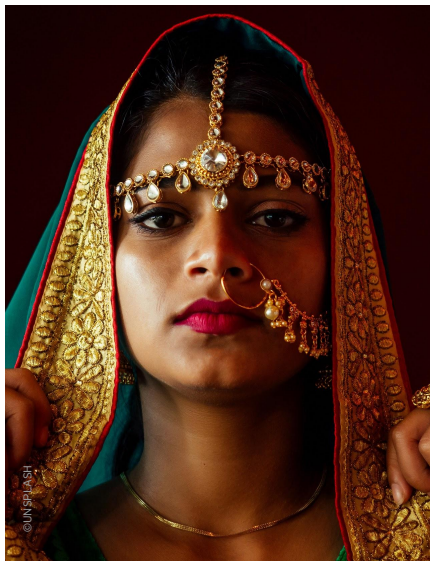




SKIN CARE

EU07656 | MASK'MALLOW

Patented solid radiance sleeping mask



O/W Emulsion



NATURALITY PROFILE according to ISO 16128 norm

93.0% BIODEG.

BIODEGRADABILITY Theoretical amount of water or readily biodegradable ingredients presents in mixture.*

Pleasant and fun playtime

Velvet skin feel

Powdery finish

* Data provide from OECD tests, QSAR calculations, products SDS and literature.

A	Agar Agar Aqua/Water	0.70% Up to 100%
B	MONTANOV™ 202 EMOGREEN™ L15 DUB 810 C* KARITE CP** Helianthus Annuus (Sunflower) Seed Oil and Turmeric Root Extract Cera Alba Ozokerite	3.00% 6.00% 5.00% 1.00% 2.00% 2.50% 2.50%
C	SEPIMAX ZEN™	2.00%
D	SEPIFINE™ BB Aqua/Water	1.00% 3.00%
E	Dehydroacetic Acid - Benzoic Acid - Benzyl Alcohol - Tocopherol Triethanolamine NATIVE ESSENCE™	1.00% 0.10% 1.00%

With WESOURCE

Solid / Packaging: Jar

Challenge test: Criteria A

pH: 5.2 / **VISCOSITIES: 1M at RT:** 260,000 to 400,000 mPa.s Brookfield LV7-5 /**Recovery at RT (after 1M at 45°C):** 200,000 to 380,000 mPa.s Brookfield LV7-5**STABILITY:** 1M at RT, 45°C, cycles -5°C/+40°C.

FORMULATION ADVICES: Pilot scale - 5 kg - Silverson

Prepare phase A: disperse the Agar Agar in water heated in a kettle (90°C) under magnetic stirring. Heat phase B to 80°C. Add phase C to phase B, then phase A to this mixture. Emulsify under Silverson for 4 minutes at 4000 rpm. Cool under anchor 10 min at 150 rpm. Prepare phase D, add it to the emulsion together with phase E at 50°C. At the end of the 10 min under anchor, pour the emulsion into square moulds using a syringe. Unmould the marshmallows the next day.

The boost and comfort your skin needs!
A night mask that brings a glowing skin in the morning.

Mask'mallow: your best ally for girls night!

MONTANOV™ 202 creates a shiny formula and allows an easy release while helping to keep the skin hydrated.

(Arachidyl Alcohol and Behenyl Alcohol and Arachidyl Glucoside)
Glucolipidic emulsifier derived from vegetable origin. Promoter of liquid crystals, it plays a role in maintaining skin moisturization over time. Ecocert approved.

Beyond the non-greasy skin feel, **EMOGREEN™ L15** gives a powdery finish. (C15-19 Alkane (Plant-based & Renewable))

It is a non polar and biodegradable, plant-based emollient. It's THE alternative to volatile silicone oils. This high purity vegetable alkane is conformed to Cosmos.

DUB 810 C* adds a soft and light touch! (Coco-Caprylate/ Caprate)

Emollient from vegetable origin. Polar ester with non greasy finish and a medium playtime. Cosmos approved.

KARITE CP:** cold pressed and solvent-free shea butter (*Butyrospermum Parkii* (Shea) Butter)

A 100% natural, sensorial emollient with healing and nourishing properties thanks to a very high content of unsaponifiables.

SEPIMAX ZEN™ imparts a velvet and elegant skin feel.

(Polyacrylate Crosspolymer-6)
Pre-neutralized powder polymeric thickener with a MAXIMUM resistance to electrolytes thanks to its high associative behavior. Efficient on a wide range of pH from 3 to 8. It provides also oil stabilizing effect.

SEPIFINE™ BB creates a pleasant playtime and a matte effect. (Amylopectin)

A natural texturizing powder, ethically sourced, coming from babassu nut exclusively sourced in Brazil. This biodegradable powder provides a soft and velvety skin finish.

NATIVE ESSENCE™ provides radiance to the skin. (Caprylic/Capric Triglyceride and *Critthum Maritimum* Extract)

Detoxifying active extracted from a halophyte plant, Sea Fennel.

ADDITIONAL INGREDIENTS: Agar Agar: AGAR-AGAR (SIGMA-ALDRICH) / Helianthus Annuus (Sunflower) Seed Oil and Turmeric Root Extract: TURMERIC ROOT BIO FAIRTRADE EXTRACTIVE (BOTANICA) / Cera Alba: CERABEL BLANCHE DAB (CERESINE) / Ozokerite: GERZO RS LA/O (BAERLOCHER) / Dehydroacetic Acid - Benzoic Acid - Benzyl Alcohol - Tocopherol: K903 (SCHULKE) / Triethanolamine: TEA99 (DOW).

*Stearinerie DUBOIS's and **SOPHIM's products distributed in the US by Seppic

A formula related to Breathtaking Rituals concept

More informations available on seppic.com

SEPPIC

All information contained herein is intended merely to demonstrate the utility of Seppic products, and should not be construed as granting license to practice any compositions or methods covered by a patent or a patent application. All information contained in this specific technical documentation is believed to be accurate and has been set up by Seppic according to its own described methods and processes. Seppic however does not assume any liability or risks involved in the use of its products for the preparation and the assessment of the hereinabove formulation since the condition of use are beyond its control. Seppic customer must insure that the duplication of the hereinabove formulation is not infringing any intellectual property rights and that it complies with any regulatory status.

A company
Air Liquide
HEALTH CARE