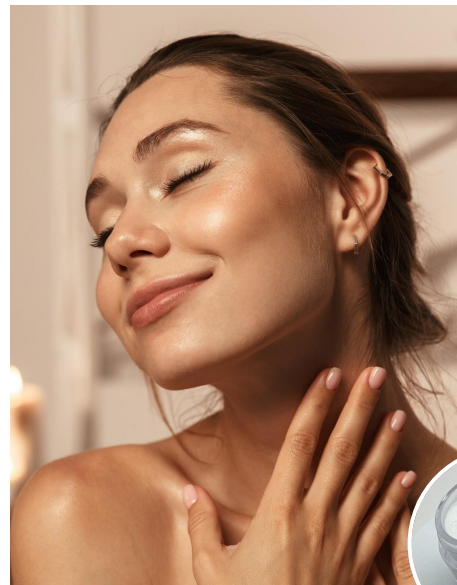




AS40217 | THE PERFECT BALM

The lightness of touch with the comfort of a balm



Classical W/O Emulsion
Balm Texture
Fresh and Soft Final Touch

A	D. Water	Up to 100%
	Glycerin	6.00%
	SEL GRAIN	1.40%
	AQUAXYL™	3.00%
	Pentylene Glycol	1.00%
	Hydroxyacetophenone	0.45%

B	EMOGREEN™ L15	8.00%
	LANOL 1688	2.00%
	EASYNOV™	3.50%
	Beeswax	6.00%
	DUB BG*	3.00%
	Bismuth Oxychloride and Ethylhexyl Hydroxystearate	0.30%
	SEPIFINE™ BB	2.00%

C	Fragrance	0.05%
----------	-----------	-------

White balm / Packaging: Jar
Conductivity (After 1M): 0.000 µs/cm
VISCOSITIES: 1M at RT: 424, 000 mPa.s Brookfield LV4-6 /
Recovery at RT (after 1M at 45°C): 386,000 mPa.s Brookfield LV4-6.
STABILITY: Stable M1 at RT, 45°C, -18°C and cycles -5°C/+40°C.

FORMULATION PROCESS ADVICES / Weigh phase A and B and heat them to 80°C separately. Add phase A to phase B slowly under Silverson rotor-stator 4000 rpm and continue homogenizing for 4 minutes. Cool down under anchor stirring 100 rpm. Add phase C at 65°C and stir 10 minutes to around 50-50°C and filling to packagings.

A new generation of W/O emulsions thanks to EASYNOV™

This novel formulation form offers surprising textures, marrying **freshness and cushion effect** **EASYNOV™** (Octyldodecanol and Octyldodecyl Xyloside and PEG-30 Dipolyhydroxystearate) Liquid lipophilic emulsifier. EASYNOV™ realizes emulsions with an internal gelled aqueous phase extra-rich in water by a cold process with gentle stirring: the GELTRAP™ emulsions.

SEL GRAIN™ exfoliates and revitalizes the skin while also increasing metabolism and circulation of the scalp. (Sea salt) Its a Sea Salt, used in massage applications on the body and to help **reduce stress**.

Beyond the **lightweight** and **non-greasy** skin feel, it gives a **powdery finish** **EMOGREEN™ L15** (C15-19 Alkane (Plant-based & Renewable) EMOGREEN™ L15 is a non polar and **biodegradable, plant-based emollient**. It's THE alternative to volatile silicone oils. This high purity vegetable alkane is conformed to Cosmos and Natrue. Inert and stable, it can be used in all types of applications, even in extreme conditions (pH, oxidizing/reducing media...)

LANOL 1688 (Cetearyl Ethylhexanoate) **Emollient agent** which is **easy-to-emulsify**. LANOL 1688 gives a soft and light touch to the formula, and contributes to spread the cream-gel easily.

SEPIFINE™ BB brings **softness and comfort**. (Amylopectin) **A natural texturizing powder**, ethically sourced, coming from babassu nut exclusively sourced in Brazil. This biodegradable powder provides a **soft and velvety skin finish while creating a pleasant playtime and matt effect** Readily biodegradable : >75% in 28 days**

AQUAXYL™ moisturizes and restructures the skin by harmonizing the hydrolic flow of the skin. (C15-19 Alkane (Plant-based & Renewable) and Coco-Caprylate/Caprate) **Water reserves are instantly boosted, water circulation is improved** in all skin layers and water loss is reduced (in vitro and in vivo tests prove this efficacy). It's mechanism of action has been validated by cosmetogenomics. Cosmos and Natrue approved.

Partner Ingredients

DUB BG* (Glyceril Behenate) A texturizing agent, that acts as a stabilizer, thickener, and co-emulsifier.

ADDITIONAL INGREDIENTS: Pentylene Glycol; Microcare emollient PTG (Thor) /Hydroxyacetophenone; Microcare Antioxidant HAP (Thor) /Beeswax (Croda) /Bismuth Oxichloride and Ethylhexyl Hydroxystearate. Timron liquid Silver (Merck) /Fragrance: Frag86335480 (Givaudan)

* Stearinerie Dubois' products distributed in the US by SEPPIC Inc.

More informations available on seppic.com



All information contained herein is intended merely to demonstrate the utility of SEPPIC products, and should not be construed as granting license to practice any compositions or methods covered by a patent or a patent application. All information contained in this specific technical documentation is believed to be accurate and has been set up by SEPPIC according to its own described methods and processes. SEPPIC however does not assume any liability or risks involved in the use of its products for the preparation and the assessment of the hereinabove formulation since the condition of use are beyond its control. SEPPIC customer must insure that the duplication of the hereinabove formulation is not infringing any intellectual property rights and that it complies with any regulatory status.

